

Interlocking Studded Walkway Mats

Product Code: RC04114

Key Features

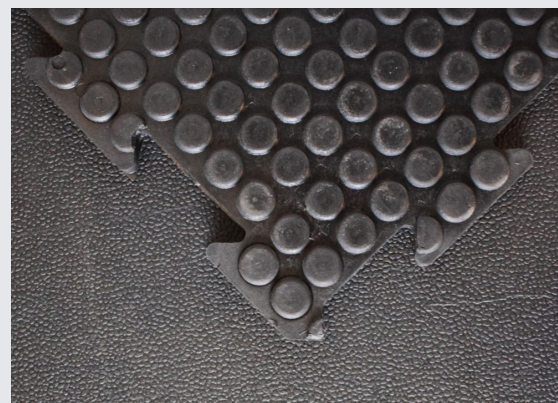
- Highly durable
- 100% premium non-porous rubber matting
- Anti-slip surface
- Resistant against punctures and tearing
- Provides additional warmth and insulation
- Helps to reduce dust levels for improved health
- Reversible for longer life expectancy

Size Specifications

Stock Sizes	Weight (kg/m ²)
1.0m x 1.0m x 17mm	17.5

Technical Specification

Properties		Data
Product		Anti-slip stable mats
Compound		NR/SBR
Hardness (Shore A)		65°
Density (SG)		1.4 g/cm ²
Tensile Strength		5 Mpa
Elongation (min)		300%
Abrasion Resistance (mm ³)		200 mm ³
Working Temperature Range		-20°C to + 70°C
Hot Nut Analysis Test	Ignition:	No
	Time to reach the ring including nut application	Did not reach
	Classification	Class 1



ISO
9001 : 2015
REGISTERED



The information contained on this product information sheet is to be used as guidance. The advice is given in good faith and does not constitute any guarantee or recommendation for suitability. RubberSmart cannot be held liable for any damage caused by incorrect installation. We hereby reserve the right to change the technical information herewith without notification or prior agreement.